



baycreekmadison.org

Bay Creek Bulletin

Meet Chuck Erickson – Dane County Board Supervisor

My name is Chuck Erickson and since 2002, I have been a member of the Dane County Board of Supervisors. Dane County's supervisory districts have changed due to redistricting, and the Bay Creek neighborhood is now a part of the district I will be representing after the spring election on April 5th.

For the first time, Dane County's electoral districts have been drawn by an independent commission free from partisan influence. I am proud to say I supported the creation of that commission and its recommended district map including the changes it made to the district boundaries where I serve. This new district, called District 23, includes several areas and neighborhoods I have long represented: the Monona Bay Neighborhood (where I live), the Triangle Neighborhood including Bayview, and parts of the Greenbush neighborhood. It also now includes the Bay Creek Neighborhood, parts of Bram's Addition, Burr Oaks, Capitol View Heights, Waunona and more.

Over the course of my years on the County Board, I am proud to say I have stood with people of color, older adults, low-income residents, those with mental health challenges, the LGBTQ+ community (of which I am a member), working people, and children.

Personally, I was born in Madison and grew up in Dane County. That legacy has given me a love of nature and a deep concern for the environment; a commitment to justice

in public affairs; and a desire to listen, learn, and find common ground. My main purpose in running for the County Board again is to continue my work and advocacy for the environment and our lakes, rivers and streams but specifically with Monona Bay and creating a storm water management plan for the Bay.

In particular as a Dane County Board Supervisor I have

- Addressed affordable housing by listening to the needs of the Bayview community. I was instrumental in convincing Dane County to contribute **(Continued on page 4)**

Review of Neighborhood Documentary: "A Hidden Gem"

By Sonja Darlington

"A Hidden Gem" is just that – a great film about the Bay Creek neighborhood by Lakeside neighbor Martin Saunders. The documentary on the 366 Lakeside Street mural captures the creative spirit of all the participants: artists, kids, and neighbors. Many of you, including those who merely stopped by chance, will enjoy seeing yourselves and your art making incorporated into the film. Of particular note is the cordial communication between our local community and the Dane Arts Mural Arts (DAMA) artists, one of whom is our own well-known muralist Alicia Rheal! The story line follows the idea of a bluegill as the central focus of the mural opposite the Lakeside Street Coffee House.

The documentarian Saunders, another talented Bay Creek citizen, focuses on the initial conceptualization of the mural, the visual rendering of community suggestions, the labor-intensive work by the DAMA crew, the depiction of the community mural paint days, and the participation of so many children and adults in Bay Creek. The music is provided by Trio Soleil (of Madison), a band that plays French tunes with a Django feel and has some upcoming performances at Lakeside Coffee. The mural took many months to complete, and by contrast the 30 minute film seems to go by too fast. It is truly exciting to see the documentation of a community, like ours, which despite the pandemic and social/political events in the past year, was able to reach beyond these challenges to embrace its neighbors in a project that is beautiful, iconic, and reflects the joy of living in Bay Creek. Thanks to all of you who made the mural and the film possible. Bravo! Be sure to catch it on YouTube. https://www.youtube.com/watch?v=ajefTLMnGmI&ab_channel=MartinSaunders ❖

BAY CREEK BILLBOARD

Bay Creek Neighborhood Association (BCNA) Meetings

– Second Thursdays of the Month: February 10, March 14, April 14 6:30 pm. See baycreekmadison.org for agenda and information on joining the meetings remotely.

Guided Nature Walks: Friends of Olin Turville (FOOT) –

Second Sundays of the Month: February 13, March 10, 1:30 pm. Meet at the Turville Parking lot off of John Nolen Dr.

Food Pantry: Tuesdays 10:00 – 12:00 pm and Thursdays 5:15 – 7:30 pm.

Friday Meal: Free; Fridays 12:00 – 1:00 pm. St. Mark's Lutheran Church 605 Spruce St. Volunteer Contact: Elaine, 608-256-8463; StMarks@StMarksMadison.org

Monona Bay Shoreline Clean-up – Friends of Monona Bay.

Second Saturdays of the Month: 10:00 am – 12:00 pm. Contact Nina for information: Email: ninaj@wisc.edu, phone: 258-1788 or 698-9708.

Bay Creek Neighborhood Association December notes

Fred Turkington notetaker

First, alder Tag Evers reported the city working on **Transit-Oriented Development**, seeking increased housing density near new **Bus Rapid Transit (BRT)** stations. The city budget and current plan includes these electric buses going up the top of State St. and around the Capitol Square. BRT will be fully implemented by 2024. The alder recapped the **Accessory Dwelling Units (ADUs)** building ordinance change, which the Common Council passed: its budget includes a \$400k revolving loan fund to set up ADUs. Negotiations continue with an established **grocer** for the Truman Olson site. The CDA / Bayview triangle construction continues. Tag reports the **guaranteed basic income pilot** project (Madison Forward Fund) is going forward (he sits on the task force). A **Lake Wingra heritage** task force that the Alder also sits on is seeking input from Ho-Chunk elders on burial mounds and other native interests related to the lake. The alder is working to pass a **Dark Sky Ordinance** to limit light pollution in Madison. He is further working on municipal bonds to support **affordable housing**. The city will be hiring a digital access coordinator to ensure **digital access** to education – across MMSD, MATC, MPL and other educational entities.

We discussed the idea of the neighborhood **annexing the Olin Triangle**, the area south of Wingra Creek, west of John Nolen, and north of the Alliant Energy Center campus (proposed site for the 18 story building). A neighbor supported annexing the Triangle so that the city and developers would legally be required to notify BCNA of projects there. We discussed past annexations such as one where neighbors in an adjoining neighborhood voluntarily joined BCNA. Currently, nobody lives in this Triangle. Concerns were raised involving the appearance of imperialism / a takeover; the fact that this area would cause Bay Creek to span two aldermanic districts. Others, including the alder, raised points that Bay Creek neighbors have found plenty of avenues to express their voice on proposed developments in that triangle to date. A point was raised that

the district 14 alder is not obligated to notify BCNA about development in this area, which is not covered by an existing neighborhood association and shares more resources with Bay Creek than other district 14 neighborhoods. As we didn't have a quorum, we didn't vote on the proposal at this meeting.

We had a discussion with some contention on **viewsheds from Olin Park and Turville Conservation Park** of potential apartment buildings that could be built on the east side of John Nolen, near current hotels and businesses. Traffic calming on Lakeside Street connected to the city's 2022 **Safe Streets plan** includes hundreds of streets including several in Bay Creek; it is starting to prioritize these projects. The BCNA transportation committee is coordinating with the alder, some neighbors, and the city. Tag has asked for a meeting with the city traffic engineering department and interested Bay Creek neighbors in early 2022. We postponed a vote on having regular monthly meetings due to lack of quorum.

We heard a presentation on **identity theft**, and related to how you can safeguard yourself against identity theft. It's estimated that 83% of Social Security numbers are exposed in some fashion. You can freeze your credit at the 3 major credit bureaus, and put a passcode on your tax submissions with the state of Wisconsin and the IRS. Lastly, we did a roundtable for each participant to express their opinion on the presence of an 8-story apartment building in the neighborhood. ❖



Oriental Shop

Mon. 10:30-6
Wed.-Thurs.-Fri. 10:30-7
Sat. 10:30-6 Sun. 12-5
(Closed Tues.)

Oriental Groceries
Seafood
Fresh Vegetables
251-7991

1029 South Park Street
(just beyond Fish Hatchery Road)

Madison, WI 53715

東芳



RE GOLDEN produce

We're in your neighborhood!
Since 1985-in the green building with trucks that deliver to lots of restaurants and other food places in the area.

1337 Gilson St.
608.255.4802
6:00am-2:00 p.m.
Or by appointment

Check out our web site:
www.regoldenproduce.com
Want to peek inside?
Call Brandi at 255.4802

Buying or Selling..... the point is Noot!

DOUG NOOT ABR, GRI
BROKER / ASSOCIATE / UW ALUMNI
608-663-8323
dnoothomes@gmail.com



Bay Creek Resident & Realtor since 2001



KELLERWILLIAMS

Bay Creek Neighborhood Association January notes

Fred Turkington notetaker

First, alder Tag Evers reported. Common Council adopted the **South Madison Plan** with small changes to increase density in the transit-oriented bus-rapid-transit (BRT) corridor. **Glenway Golf Course** closed to winter activities: course landscaping under reconstruction. Alders asked to recommend citizens to the Mayor to sit on the **Monona Waterfront Ad-Hoc Committee**; Alder Evers recommended Allen Arntsen, Andy Meessmann, and Clare Oleksiak. The **Madison Metro School District** seeks volunteer to commit to 1 day per month as substitute teachers, custodial and kitchen/cooking staff.

Transportation: The city has begun its winter planning for the upcoming year's traffic engineering activities. Its new process places traffic infrastructure under the umbrella of the **Safe Streets Program**. Over 100 projects identified citywide currently being prioritized, with two focus areas: safe driving

Uber Basics: A Sociological Glimpse of Madison

By David Snook

For me, a retired interior designer, driving for Uber is a great way to get out of the house, move around our beautiful city and surrounding countryside while meeting interesting people. That's the fun part: Each ride request is like a gift, its contents not revealed till the rider gets into my car and begins to converse and connect. And Madisonians are an interesting and amazingly varied bunch! Of course, the University's diverse student body and faculty, with their tremendous breadth of academic pursuits, offers opportunities to expand my knowledge of many subjects: graduate students usually work on some interesting research project; researchers might talk about the very edge of cancer scholarship or materials science, biotech or quantum computing! And, in case you were concerned about today's youth, relax: the undergrads are just as interesting and motivated.

Besides the University, Madison attracts many gifted scientists and other professionals to its growing tech businesses. Rides with the people from Exact Sciences, Epic Systems, AmFam, Raven, etc. are just as interesting; I like just knowing what's going on in those exemplary companies. As a bonus, many of these professionals are from other countries. I was surprised to learn (from my Uber sample) how many Africans choose to live in Madison. Nigerians, Kenyans, Ugandans, Ivoirians, Senegalese, Gambians – you name it, they've all been in my car and shared their various impressions of America. Many South Asians, Koreans and Chinese are also attracted to the STEM work opportunities in Madison, and love to talk about their hometowns and living in America.

Like much of America, Madison has a substantial Latinx community, and many of them use Uber regularly. Their stories are more blue-collar. They are people who hold our community together, working food service, elder care, construction, commercial cleaning services, etc. Not every one of my over

speeds and intersections of the connector and arterial streets in Bay Creek; and bicycle connectivity through the neighborhood (a north-south bike connector from the Cannonball Path to UW Madison campus). John Nolen to be reconstructed in 2026, and Park St. to get traffic redesign as part of the BRT project.

A Lakeside neighbors group advocated for additional **Lakeside St. traffic calming** as a continuation of last year's improvements. The comprehensive traffic calming plan supported by alder Foster at a city Transportation Commission meeting last year called for 4 speed humps pending consent by Madison Fire Department. MFD denied 2 of the 4 humps: the project is still pending. The neighbors group continue to advocate for better traffic calming policy – per their example, if MFD gets right of first refusal, it's a very narrow view of safety compared to the risks posed to pedestrians and cyclists moving through the neighborhood. A few committees gave their reports. **Friends of Monona Bay** made a splash on the evening news and celebrated having picked up 24,000 bags of trash. Feb 12 at 10am at Brittingham Boats is the next trash cleanup. ❖



ALLEGRA
MARKETING • PRINT • MAIL

INSTY-PRINTS
DESIGN • PRINT • SIGN

Phone (608) 255 0046
Web www.allegramadison.com

2 E. Mifflin Street Madison, WI 53703

Personal training • Virtual and outdoor group classes

Evie Lynch, CPT
Creating a sustainable relationship with movement

COMMON SENSE FITNESS

common-sense-fitness.com

20,000 rides has been perfect, but importantly, I've only encountered a handful, maybe six passengers that I'll never see again in my car: riders and drivers rate each other and Uber's algorithm ensures that if I give a rider a low rating, their next ride request will go to different driver. The reverse is true too: If you have a bad or uncomfortable experience on an Uber ride, your low rating guarantees that you'll never see that driver again. So, my Uber sample confirms Madison's "Midwest Nice" reputation!

Uber is not a career, nor a way to make a reliable, steady living. Uber is a digital application that connects riders with thoroughly vetted drivers. It works for me, because I like meeting new people. Oh, and the money? A bonus that figures out to between \$15-18/hr. net after gas and maintenance. These are the basics concerning Uber driving in Madison. ❖

Transportation Report

By Allen Arntsen

The city has scheduled several transportation improvements for Bay Creek in 2022. Bikers will be happy to see the Cannonball bike path extended from its Fish Hatchery Road terminus to the Wingra Creek path west of Park Street, going behind Capital Newspapers. Additional plans include connecting the South Shore Drive Bike Boulevard to the Wingra Creek path via Gilson, Lakeside, and Rowell Streets, an Olin Avenue crossing at the pedestrian/bike path west of Goodman pool, finally crossing the Goodman maintenance facility parking lot to Wingra Creek. The city plans to hold a March public information meeting to get community feedback on this plan. That same meeting will also discuss modifications to the Shared Streets plan for South and West Shore Drives.

The city has also identified several potential transportation infrastructure improvements in Bay Creek as part of its Safe Streets program. The map below shows an initial list of these potential changes. The BCNA transportation committee has prioritized slowing traffic on Olin Avenue and Lakeside Street: last year, the city installed speed bumps on Lakeside Street near Franklin School and the Romnes apartments, and a traffic circle at Whittier Street. In addition to the city's initial projects list (see map), Lakeside Street residents are advocating for further traffic calming improvements at the east and west ends of the street, where it joins John Nolen Drive and Park Street.

The city Transportation Commission will likely address these proposals and those identified by the city at its February 9 meeting: interested residents are encouraged to appear (virtually) and voice their opinions on proposed neighborhood traffic improvements. The neighborhood committee and city Traffic Engineering staff are also working to identify and implement traffic calming measures on Olin Avenue, and to

support other traffic safety measures, such as on Colby Street and various Park Street crossings.

The neighborhood transportation committee meets roughly monthly, depending on the status of transportation issues, generally on the first Monday at 7 pm. Interested residents should contact the committee chair, Allen Arntsen, at allenarntsen@gmail.com with any questions or comments. ❖

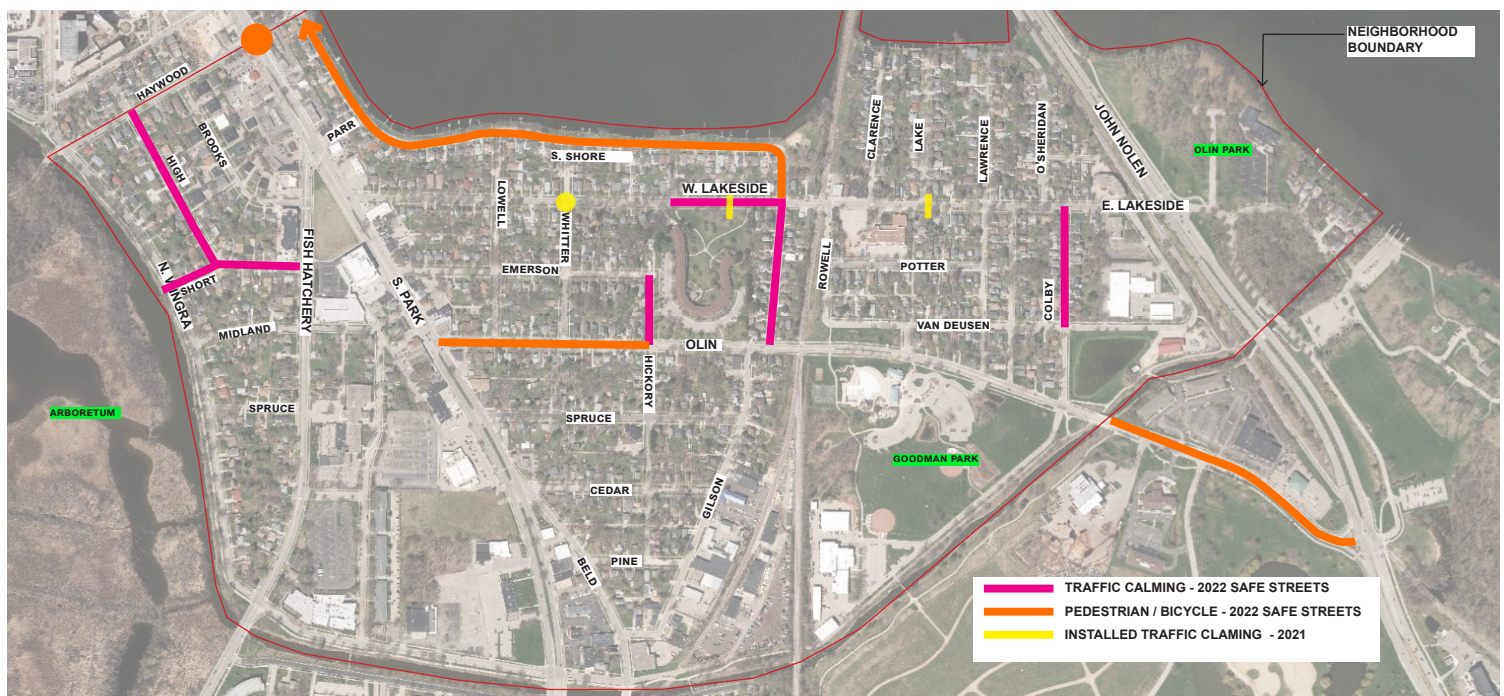
Board Supervisor From page 1

\$1.2 million to support Bayview's critically important and widely praised affordable housing and neighborhood center expansion and redevelopment.

- Chaired the Lakes & Watershed Commission, securing \$300,000 for stormwater management planning and devices for Monona Bay and coordinating with the City of Madison's flood mitigation planning process. I have also led efforts to increase aquatic weed harvesting and initiate flood prevention dredging in the Yahara river.
- Served as a member of the Henry Vilas Zoo Commission, creating an immensely popular scholarship program that allowed a diverse group of low-income children to participate in activities and educational programs at the Zoo. During the pandemic, this program became the 'Zoo School' where students were able to complete their schoolwork with stable internet connectivity.
- Pressed the Alliant Energy Center to be more transparent and responsive to area residents' concerns.

This change in the boundaries of my district is an exciting opportunity. It unites more of the Lake Monona shoreline, diversifies constituents, and brings naturally connected neighborhoods together.

If you have specific questions, please contact me at 608-212-8753 or chuck@chuckerickson.com. I look forward to meeting you! ❖



ALDER REPORT

By Tag Evers



South Madison Plan: The Common Council met on January 4th for the first meeting of 2022. We approved the South Madison Plan, the culmination of a multi-year process that had been slowed by Covid. Council voted to amend the Plan to allow for a modest increase in density in the Thorstad Concept Area. I supported this change in the belief that urban infill near a major transit route like South Park St. calls for a higher degree of density as a strategy to reduce carbon emissions. Moreover, the increase in density would allow for more home ownership opportunities for South Madison residents, a need which surfaced during resident engagement sessions held by city staff throughout the planning process.

Lake Monona Waterfront: The Mayor will be appointing community members to the Lake Monona Waterfront Ad-Hoc Committee to oversee a design challenge process. The goal is to recommend optimal strategies for upgrading the waterfront along Lake Monona from Law Park to the northern section of Olin Park. I've submitted four D13 residents for consideration, three of whom live in Bay Creek.

Truman Olson: Negotiations with the new grocer continue and we remain on track to avoid a gap in grocery services. Arrangements have been made to keep Pick 'N Save open beyond the terms of their current lease. More details should be available soon.

Traffic Speeds: Speed management is a key component of Madison's Vision Zero project to eliminate traffic fatalities. The posted speed limit on South Park has been reduced to 25 mph. If you witness someone traveling at excessive speed, call the Speeders Hotline number: (608) 266-4624.

Volunteer at MMSD: It's no secret that the ongoing pandemic has had an outsized impact on our local schools. Madison Metropolitan School District has issued an all-call to help keep our kids in school. MMSD needs classroom, clerical, supervision, custodial and food services support. For information about how to sign up, please go to: <https://www.madison.k12.wi.us/partnerships/volunteering>.

Parking Rules During Snow Emergencies: Bay Creek streets are within the Snow Emergency Zone, which means alternate street parking is only required during a designated snow emergency. However, residents in Bay Creek remain subject to the Clean Streets/Clean Lakes year-around posted parking rules. While actual street cleaning only happens sporadically during the winter, this posted four-hour block of no parking allows the plows to

clear all the way to the curb, preventing the narrowing of our streets over the course of the winter.

Glenway Golf Course: The Glenway Golf Course is often a destination for winter recreation, whether it be sledding or cross-country skiing. Not this year, as the course grounds are closed to keep the reconstruction process on track.

As always, if you have questions or concerns, please contact me at district13@cityofmadison.com or 608.424.2580. ❖

ProAxis LLC

RESTORATION & WATERPROOFING

Basement Waterproofing
Foundation Crack Injections • Foundation Stabilization
Drain Tile Systems • Grade Correction • Egress Windows

Office: (608) 279-7699 • proaxis@proaxisllc.com
Shane: (608) 438-9606 • ssparby@proaxisllc.com
www.proaxisllc.com

Co-op Preschool Openings Available!



Providing social, play-based, part-time, mixed-age preschool to local families for over 50 years!



UNIVERSITY
HOUSES
PRESCHOOL
PARENT COOPERATIVE

6033 Odana Road | (608) 238 3955
kmbeck@uhpparentcooperative.org
uhpparentcooperative.org

Soon For Sale!

1011 Homer Ct



608.663.8323

doug@noothomes.com

NOOT Homes

QUALITY HARDWARE



Family-Owned Since 1971

1201 South Park Street
Madison, WI 53715

info@qualityhardwaremadison.com
Ph (608)256-8106 Fx (608)256-1539

www.qualityhardwaremadison.com

Ask for the "neighbor discount"!

SLATE BLUE

By Robert Koehler

With the moon's appearance,
a negligible
sliver in a corner of the sky,
brumal dark
hardens, turns to a slate blue.
Distant as spring,
the stars' glimmer is honed by
rock hard cold.
Finally crusted, snow's blanket
seems permanent.
Brittle silence holds its breath.
A midnight lamp
left lit is tonight's lone shadow.

—Robert Koehler is a Bay Creek
neighbor and poet.
See his work at:
robertupatdawn.wordpress.com

BOOK REVIEW

By Robert Koehler

Mantel Pieces : Royal Bodies And Other Writings From The London Review Of Books

Hilary Mantel is the only British writer to win two Man Booker Prizes. Best known for her historical fiction, for three decades she has also contributed essays, reviews, and pieces of memoirs to *The London Review of Books*. *Mantel Pieces* is a collection of these works, running from 1988 (her earliest) to 2017. Some of the individuals she profiles include the playwright John Osborne, the Virgin Mary, Christopher Marlowe, Marie-Antoinette, and numerous figures from the Tudor period in England.

Her topics range from the French Revolution, Tudor England and the reign of Henry VIII, witchcraft, and Catholicism, as well her personal life. One of these particularly stands out, *Meeting the Devil*, an account of a surgery she underwent in 2010 that resulted in life threatening complications. It is one of the better pieces I've read on pain and illness.

Mantel's passionate and eloquent prose, laced with witty asides, fully fleshes out the historical characters she investigates. This collection proves she is an author who excels in humanizing the individuals she describes. For readers aware of her fictional work or not, *Mantel Pieces* will inform and delight.

FOOT Notes By Andria Blattner

Finally, a beautiful layer of soft white snow covers the leaves and frozen ground. What fun - skiing, hiking, snowshoeing, sledding, tubing! But what does this snow layer mean to animals in northern states that have evolved to live in a winter environment defined by a constant layer of snow?

Grouse and Ptarmigan burrow into snowbanks to find protection from the wind. Small mice running on the surface dive into snow if it gets too cold. The properties of snow – its density and thermal conductivity (insulation) – are extremely important to these animals. Newly fallen snow is only 8% water and has the same insulation value as dry wood. But as snow ages, it metamorphoses: water crystals compact and exclude air; settled snow is 30% water; new ice 70% water. The more water, the easier heat is conducted away. As the top crust layer compresses, especially when traffic packs it down, snow loses its insulating properties. This is a good argument for staying on trails.

As snow settles on rocks or logs it will slide off as a mass and leave gaps along the edges. These spaces (called “subnivean”) become well protected tunnels for rodents and insects where they can move freely to search for seeds and plants to eat. These animals' environment depends on repeated snowfalls.

Some animals hunt or browse for prey on the snow's surface; others, like snowshoe hares with their large hind feet, have

adapted to distribute their weight to move on the surface. Many animals increase the number of hairs on their paws to spread out their weight. The changing climate, with its inconstant snow cover and temperature extremes, will be challenging for both wildlife and the human population.

Bird and Nature walk programs, sponsored by Friends of Urban Nature (FUN), the City Parks department, and FOOT continue: February 13th Dane Gallagher will talk about owls; maybe we will see Great Horned and Snowy Owls! Dane will also lead the March 13th walk – we will be on the lookout for early migrants. Julie Melton will lead the April 10th walk to explore the early signs of spring. All the walks are on Sundays from 1:30 to 3:00 PM. Meet in the Turville parking lot across from the Alliant Center (not the boat landing lot at Olin). ❖

Curt Dimmig

owner/designer
608 212-0633

Looks like it's.....

TIME2REMODEL

www.time2remodel.com

curt@time2remodel.com



Winter Salt Use Affects Lakes' and Drinking Water Quality

By Lisie Kitchel

It's winter and that means snow and ice and time to think about keeping your driveway and sidewalks safe for yourself and others. So, what can you do?

Salt is often used to treat icy surfaces, but we should use it only after snow is removed and only in areas needed for safety. Salt is effective, if used correctly, but won't work when the temperatures drop below 15 degrees and is often over applied. Believe it or not, **you can treat an entire 20-foot driveway or 10 squares (60-70 feet) of sidewalk with just a coffee mug of salt** – it may not look like enough, but it does the trick! If you use salt, be sure to distribute it evenly; clumped salt is wasted salt. And make sure to use the right amount: in this case, more is not better.

Salt is one way to deal with icy surfaces, but using salt, especially more than needed, affects the quality of water in our lakes and groundwater. *It only takes 1 teaspoon of salt to pollute 5 gallons of water to a level that is toxic for freshwater ecosystems.* Salt use has markedly increased chloride levels in area lakes. Winter chloride spikes also strongly affect local creeks and marshes. Perhaps most importantly, road salt, along with other salt use, has increased sodium and chloride levels in our drinking water. In Madison, at least 5 wells have been identified as having salty tasting water, leading the Water Utility to look at deeper wells and expensive desalination options. The best way to reduce this salt contamination is to prevent it.

Home owners have alternatives to salt for dealing with icy conditions that are less harmful to our aquatic resources. Sand

is commonly used and readily available: Madison provides free sand in barrels and in parks throughout the city. To find it, you can *google Madison sand locations* or go to the city website. You can also use other salt-free options, including various brands of alternative ice melters (available at grocery and hardware stores); kitty litter (clean, not used); and coffee grounds.

You can minimize or avoid icy conditions by shoveling before snow turns to ice; the cleaner the surface the less likely ice will form. The more snow you remove manually, the less salt or salt alternative you will have to use to treat the ice and the more effective it will be. For more information, check out Wisconsin Salt Wise, a coalition of organizations working together to reduce salt pollution in our lakes, streams and drinking water: <https://www.wisaltwise.com/>

One last reminder: if you are applying salt, the scatter pattern should look like this image. ❖



ENJOYING THE BAY CREEK BULLETIN?

Please join the Bay Creek Neighborhood Association! Voluntary annual dues: only \$10 per household. May be paid online at the Neighborhood's website <https://baycreekmadison.org/> – click on the Contacts page link, then look for Treasurer to find the PayPal link. Or checks may be mailed to Sara Richards 710 Spruce St. 53715. (Please make checks payable to BCNA not to Sara Richards).



St. Mark's
Lutheran Church
You Are Welcome Here!

Worship

Sundays at 10:00 am

Food Pantry Hours

Tuesdays from 10:00 AM to 12:00 Noon

Thursdays from 5:15 PM to 7:30 PM

Order at Main Entrance on Spruce Street

Free Friday Community Meal

Fridays, Noon-1:00pm: Hot Meals

Inside Dining & Carry-Out Available

Physical Distancing is Maintained; Masks Required

Southwest Entrance by St. Mark's Playground

Handicap Entrance/Elevator on Spruce Street

605 Spruce St. Madison

StMarksMadison.org

StMarks@StMarksMadison.org



Offering a Full Range
of Traditional & Holistic
Veterinary Services
for your cat & dog

Dr. Megan Caldwell ♦ Dr. Lisa Olson
Dr. Erica Hellestad ♦ Dr. Katie Grawe
Dr. Kristi Bernhardt

608-270-1070

529 S. Park St., Madison, WI, 53715

FAX: 608-663-0311

www.wholepetclinic.com

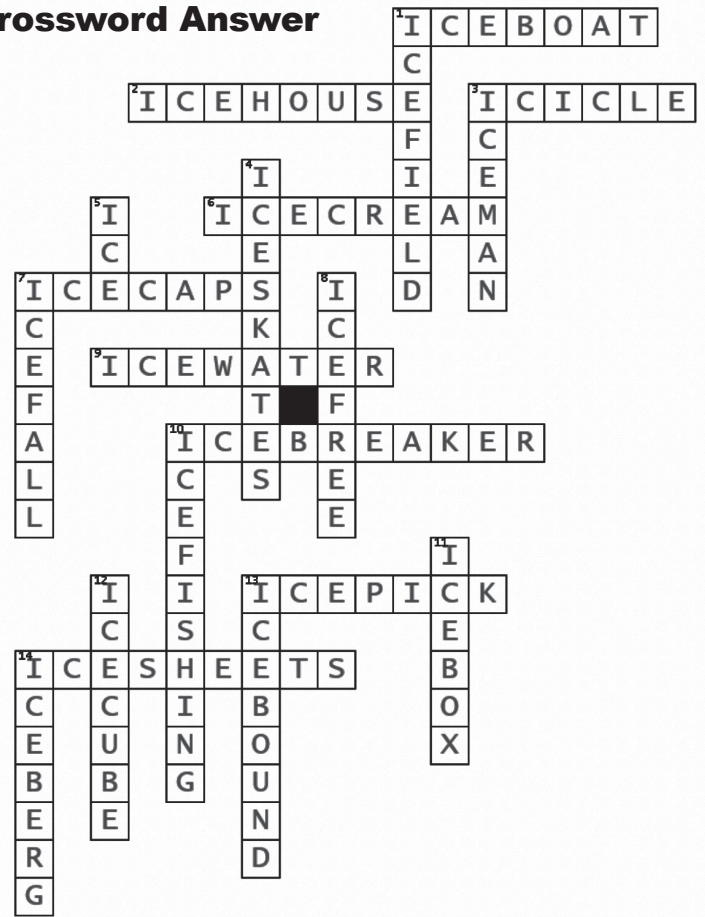


MGE announces solar and battery storage investments

- MGE is seeking approval to own 20 megawatts (MW) of solar and 11 MW of battery storage from the 200-MW Paris Solar-Battery Park to be built in Kenosha County.
- If approved, MGE will own 25 MW of solar energy and 7.5 MW of battery storage from the 250-MW Darien Solar Energy Center in southeastern Wisconsin.
- MGE also is seeking approval to own 30 MW of solar and 16.5 MW of battery storage from the 300-MW Koshkonong Solar Energy Center to be built in Dane County.
- MGE is purchasing a share of the 92-MW Red Barn Wind Farm to be built in Grant County. The wind farm is expected to begin serving MGE customers by the end of 2022.

MGE foresees resulting carbon reductions of at least 65% by 2030 -- their goal is net-zero carbon by 2050. By 2025, with the planned retirement of the coal-fired Columbia power plant, MGE intends to have eliminated approximately two-thirds of their coal-fired generation capacity. By 2035, MGE expects to eliminate coal as an energy source when the Elm Road power plant will transition to natural gas as its primary fuel source. MGE has also added an electric vehicle (EV) fast-charging hub in downtown Madison at East Washington Avenue and South Livingston Street. You can learn more about these projects at www.mge2050.com. ❖

Crossword Answer



Neighborhood Notes

LIVE MUSIC at Lakeside Street Coffee House

- Tumble Down Shack** – Friday, February 4, 7pm
- Northern Comfort** – Friday, February 11, 7pm
- Trio Soleil** – Friday, February 18, 7pm
- Don't Spook the Horse** – Friday, February 25, 7pm
- Richard Weigel** – Saturday, February 26 6:30pm
- Tumble Down Shack** – Friday, March 4, 7pm
- Classical Guitar** – March 11, 7pm
- Neighborhood Irish Session** – Friday, March 18, 7pm
- Trio Soleil** – Friday, March 25, 7pm
- Tumble Down Shack** – Friday, April 1, 7pm
- The Honey Pies** – Friday, April 8, 7pm

Net-Zero

CARBON ELECTRICITY BY 2050

Let's work together toward a more sustainable future.

Visit [Madison Gas and Electric](http://MadisonGasandElectric.com) online.

- Support clean energy for your home or business.
- Find energy-saving tips and resources.
- Explore electric vehicles.
- Access online bill payment, safety information and more.

MGE.COM

MGE2050.COM








your community energy company

GS3385 01/11/2022

Ethical Trading Company has moved and is working on getting their new location ready.



Their new home is located at 3565 Tulane Ave, Madison, WI 53714.

Currently all shopping must be done online at www.ethicaltradeco.com

Co-Founder Manuel Ramminger is a Bay Creek resident and has kindly offered free delivery to customers in our neighborhood.

Manuel can be reached at (608) 444-9542 or INFO@ETHICALTRADECO.COM

Senior Notes

NewBridge Madison provides services for older adults, 60+. For up-to-date services, classes, and activities information, check newbridgemadison.org, and Facebook: @NewBridgeMadison, call (608) 512-0000; or email info@newbridgemadison.org. *Participants must follow all Madison Dane Public Health guidelines.*

NewBridge: matches older adults to volunteers who do safety-check calls and/or friendly social calls; provides Case Managers to connect older adults to resources; delivers food pantry groceries to older adults' door on an ongoing basis; does home chores – only case management clients may receive home chore assistance; gives Zoom and In-Person Classes & Activities; runs Zoom Diversity & Inclusion Activities, for Dane County Black and Latinx older adults; feeds older adults.

NewBridge congregate free meals sites: Make meal and transportation reservations one week prior by Thursday 10:00 am with Candice at (608) 512-0000 Ext. 4006. (NewBridge accepts donations for meals mailed to 1625 Northport Dr. Madison, 53704.)

South Madison: *Madison Senior Center*, 330 W. Mifflin St. Monday-Friday, 11:30 am.

East Madison/Monona: *Messiah Lutheran Church*, 5202 Cottage Grove Rd. Tuesday and Thursday 11:30-12:30 pm; *Hy-Vee East*, 3801 E. Washington Ave. Wednesday, 10:00 am-1:00 pm and Fridays, 10:00 am-1:00 pm

West Madison: *Hy-Vee West*, 675 S. Whitney Way Wednesday, 10:00 am-1:00 pm; *Meadowridge Commons*, 5734 Raymond Rd. Tuesday, Thursday, Noon; *Good Shepherd Lutheran Church*, 5701 Raymond Rd. Friday, Noon.

North Madison: *Warner Park Community Recreation Center*, 1625 Northport Dr. Monday, Tuesday, Thursday, Friday, 11:30 am; *Goodman Community Center*, 149 Waubesa St. Monday-Friday, 11:45 am. ❖

IT IS TIME TO GET THAT HAIR BACK TO NORMAL
WE ARE OPEN AGAIN
Rockabetty's
Salon & Spa
MASKS ARE REQUIRED
Need a mask? We make those too.
www.rockabettyssalon.com/masks.html
BOOK ONLINE - BY APPOINTMENT ONLY - SORRY, NO WALK-INS
1423 S. PARK ST., MADISON, WI 53715 - WWW.ROCKABETTYSSALON.COM

Bay Creek Neighborhood Association

The Bay Creek Bulletin is published every other month by the Bay Creek Neighborhood Association (BCNA). The Bulletin provides news and information about our neighborhood and helps connect neighbors to one another. We welcome your contributions: comments, articles, drawings, photos, poetry, announcements, book and restaurant reviews. The next Bulletin will be delivered the first week of April. Submission deadline is Friday March 25.

Newsletter Managing Editor – Stanley Jackson
608 258-9794 810 Emerson St. srj29@cornell.edu

Newsletter Distribution – Kirk Elliott
255-5646 • 225 Van Deusen St
kirk_elliott@hotmail.com

OFFICERS

BCNA Contact Person – Carrie Rothburd
(608) 467-7170 • baycreek.contact@gmail.com

Recording Secretary – Fred Turkington
(440) 984-1784 • 106 E. Lakeside St.
fet4@case.edu

Treasurer/Advertising – Judy Robinson
(608) 469-1218 • judysotheremail@mail.com

COMMITTEES

Planning/Economic Development – Lisie Kitchel
225 Potter St. • 608-220-5180

Welcome – Doug Noot
663-8323 • baycreekwelcome@gmail.com

Web – Jim Winkle
259-1812 • jimwink-madison@yahoo.com

Transportation – Allen Arntsen 608-692-4293 • allenarntsen@gmail.com

NEIGHBORHOOD REPRESENTATIVES

Area 1 – Abby Davidson
Wingra Dr., west of Park Street
1025 High St • abby.s.davidson@gmail.com

Area 2 – Jody Clowes
jclowes72@gmail.com • 608-213-3455

Area 3 – Janelle Mums
janellemums@gmail.com • 608-320-7085

Area 4 – Jim Winkle
Central area between Lakeside St & Olin Ave
259-1812 • jimwink-madison@yahoo.com

Area 5 – Jenny Hayes
Tree Streets
608-630-9102 • letsdisco79@yahoo.com

Area 6 – John Beeman
Romnes Apartments
520-7173 • jbeeman53715@gmail.com

SMPC Representative – Cindy McCallum
dotckk@gmail.com

Police Dept Liaison – Carrie Cotter
Neighborhood Officer
chemming-cotter@cityofmadison.com
Michael Goodnight 608/640-9499
Office phone: 608/266-4830

Bay Creek Government Representatives

City Council – Tag Evers
2329 Keyes Ave, Madison
608-255-4071
district13@cityofmadison.com

County Board – Cecely Castillo
608-616-0312
Castillo.Cecely@countyofdane.com

State Representative – Shelia Stubbs
266-3784
Rep.Stubbs@legis.wisconsin.gov

State Senator – Kelda Roys
266-1627
Sen.Roys@legis.wisconsin.gov

U.S. Representative – Marc Pocan
258-9800 • pocan.house.gov

U.S. Senators
Tammy Baldwin
264-5338 • www.baldwin.senate.gov

Ron Johnson
(414) 276-7282
www.ronjohnson.senate.gov

New to the Bay Creek neighborhood?

Contact the Welcome Committee at
baycreek.welcome@gmail.com

The Cool Cat Rap

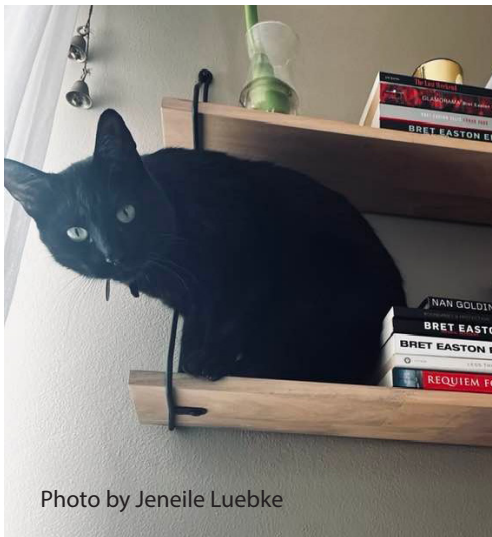


Photo by Jeneile Luebke

By Rebecca Rettenmund

Dr. Dre, he's a very cool cat.
They keep him inside, but he wants none of that.
He craves a clever neighborhood caper.
No door is too closed for this feline escaper.

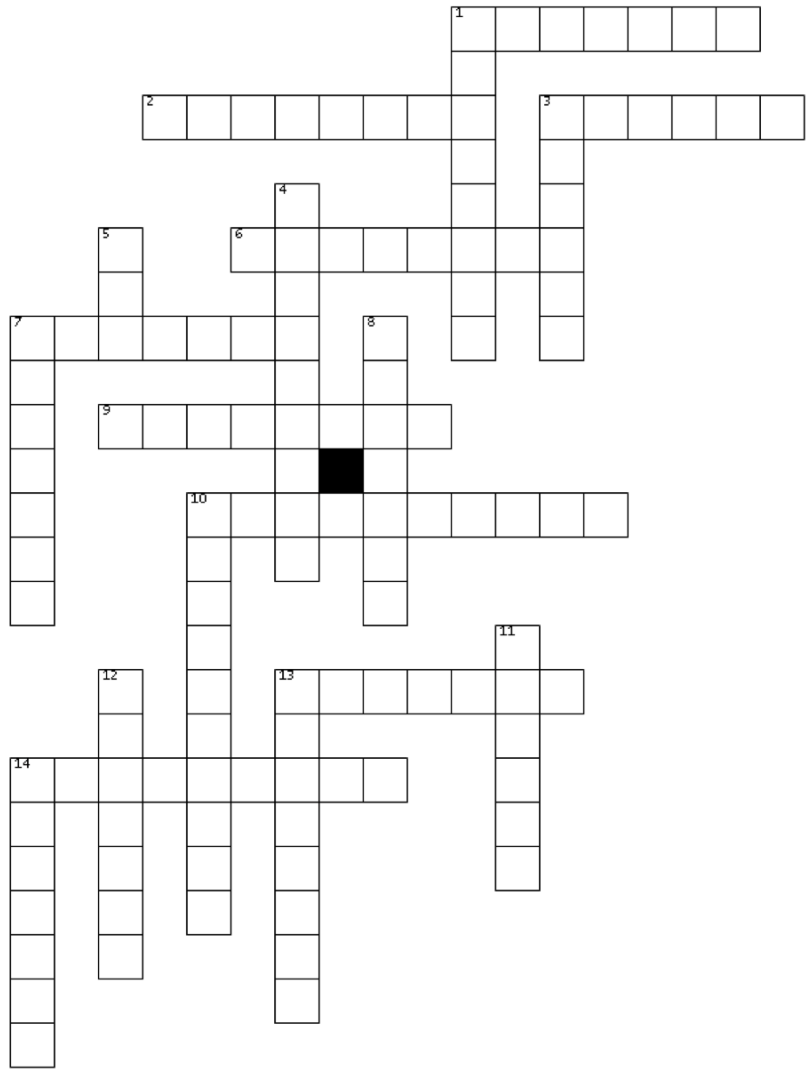
Hey Dr. Dre, where have you gone?
We're all searching for you on our Bay Creek lawn.
We've been looking steadily from dusk till dawn.
Never know where you might suddenly spawn.

To say he's curious is putting it light.
He's attracted to any peculiar sight.
He's been seen on the roof, and in a garage.
Yes, that's him in a wood chipper, it's not a mirage.
One time he was prowling the block at night.
Broke into a house and started a fight,
with the neighbor's dog, and the cops were called.
Through the doggy door, he must have crawled.

Hey Dr. Dre, where have you gone?
We're all searching for you on our Bay Creek lawn.
We've been looking steadily from dusk till dawn.
Never know where you might suddenly spawn.

In 2021 from May to June,
his owners hoped he'd come home soon.
Fliers were posted all over town.
Hoping someone would see him around.
To the relief of his owners, (though quite shaken),
someone answered the flier from the town of Brooklyn.
Though North Parish Gardens is 14 miles away,
they found a black cat too sweet for a stray.
How could Dr. Dre get this far?
Must have hitched a ride in a passing car.
That day maybe, it was his luck,
that car happened to be a UPS truck.

Hey Dr. Dre, where have you gone?
We're all searching for you on our Bay Creek lawn.
We've been looking steadily from dusk till dawn.
Never know where you might suddenly spawn.



Nice Ice Crossword Solution on page 8

ACROSS

1. Rides on frozen lake
2. Building that stores frozen water
3. Freezes as it drips
6. Summer dairy treat - 2 words
7. Cover the Earth's Poles
9. Cool drink - 2 words
10. Topic to help people relax and talk
13. Used to chop blocks of frozen water
14. Glaciers are made of these - 2 words

DOWN

1. Large floating sheet of frozen water
3. Person who delivers frozen water
4. Hockey footwear - 2 words
5. Solid Water
7. Niagara in winter
8. Port not frozen in winter 2 - words
10. Cut a lake hole for this sport - 2 words
11. Came before freezer
12. Chills drink - 2 words
13. Locked in frozen lake or sea
14. Sank Titanic